



Type: Magazine Article

---

## Superimposition in Central American Architecture

Author(s): Charles E. Dibble

Source: *Improvement Era*, Vol. 46, No. 8 (August 1943), p. 453

Published by: The Church of Jesus Christ of Latter-day Saints

---

**Abstract:** No abstract available.

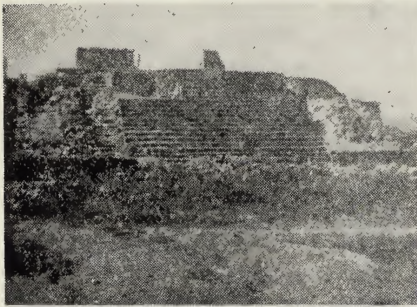
# Superimposition

## in CENTRAL AMERICAN ARCHITECTURE

By DR. CHARLES E. DIBBLE

A VERY important architectural feature of Central American ruins is the superimposing of one building over and upon older structures.

It is to be remembered that most Central American ruins are pyramid-shaped bases flattened on top to accommodate a small super-structure dedicated to one of the gods. Stairways



RUINS AT MONTE ALBAN, OAXACA, SHOWING THE MANNER OF SUPERIMPOSITION.

were provided on one, two, or four sides of the base as approaches to the sanctuary. Since a basal pyramid entailed much human effort, an old building became the core of the new one. The whole structure was capped with a more recent one, new stairways were added, and slight modifications were made. Each superimposed pyramid was higher and covered a greater area.

There were numerous causes for this practice of superimposition. Some buildings deteriorated; others were partially destroyed by conquest. The Aztecs, in particular, had the belief that the sun would cease to appear and the world would come to an end every fifty-two years. Consequently, at the close of each fifty-two-year period, they often ceremoniously defaced their buildings to rebuild them at the beginning of the new cycle.

It is the task of the archeologist to peel off these successively superimposed structures, and to study their architectural composition. It often happens that the innermost structure at one ruin is architecturally identical with an outer structure at another site. This enables the archeologist to establish sequences and to study the diffusion of various diagnostic architectural features. The importance of this line of research is that it is enabling us to establish relationships over an extended Central American area.

AUGUST, 1943

## Noxious Weed Problem Solved

by the use of

# Activated Carbon Bisulphide

with a

## Mack Anti-Weed Gun

Thousands of growers swear by this method of treating lands infested with Morning Glory, White Top, Russian Knapweed. No injury to soil. Non-injurious to livestock. Quick, efficient and economical.

Ask for Circular 212P



WHEELER, REYNOLDS & STAUFFER, 636 California St., San Francisco

Distributors — Wasatch Chemical Co., Salt Lake City and Branches



*"L. D. S. Training Pays"*

*First* in the heart of every American—

**How can I help win the war?**

The answer is the same for everyone, at home or in the Service:

**Do your job as though  
Victory depended on it!**

If you are planning to do office work, L. D. S. Business College offers you excellent training and employment service.

Fall Term—day or evening—begins September 7

Write for booklet

# L. D. S. BUSINESS COLLEGE

70 North Main

Telephone 3-2765

Salt Lake City, 1, Utah

